

MODEL IDS602

SDS LOAD CELL

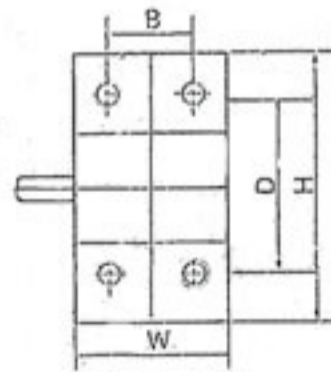
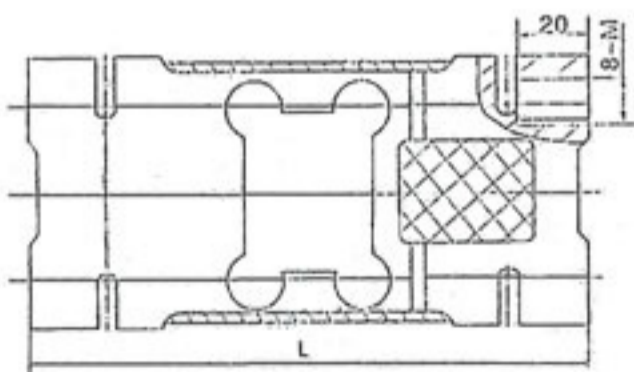


SPECIFICATIONS

| PARAMETER | VALUE | UNIT | |
|-----------------------------------|----------------------------|-----------|----------|
| Capacity | 250,500,750,1000,1500,2000 | kg | |
| Output Sensitivity | 2.0 ± 0.2 | mV/V | |
| Accuracy class | C3 | | |
| Temperature effect on zero | 0.0200 | %FS/10°C | |
| Temperature effect on sensitivity | +20°C ~ +40°C | 0.0175 | %FS/10°C |
| | -10°C ~ +20°C | 0.0117 | |
| Combined error | 0.0200 | %FS | |
| Creep | 0.0167 | %FS | |
| Input resistance | 406 ± 6 | Ohms | |
| Output resistance | 350 ± 3 | Ohms | |
| Insulation resistance | ≥ 5000 | Mega-Ohms | |
| Zero balance | 2 | %FS | |
| Temperature, compensated | -10 ~ +40 | °C | |
| Temperature, operating | -20 ~ +50 | °C | |
| Excitation, Recommended | 5-15 | V | |
| Safe overload | 150 | %FS | |
| Ultimate overload | 300 | %FS | |

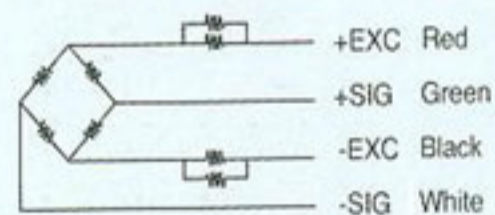
All specifications listed subject to change without notice.

Outline Dimension mm



| Capacity | Dimension | | | | | |
|--------------|-----------|----|-----|----|----|-----|
| | L | W | H | D | P | M |
| 250, 500 | 146 | 60 | 95 | 70 | 36 | M12 |
| 750-S,1000-S | | | | | | |
| 750-2000 | 176 | 76 | 125 | 95 | 46 | M16 |

Color code of cable



Dimensions and specifications are subject to change without notice.

Wiring

Cable length: 3 ± 0.1 m.